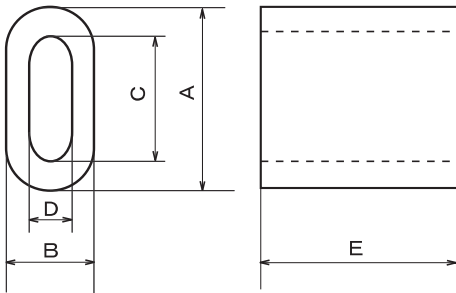


TOROIDAL CORE (GTRE)



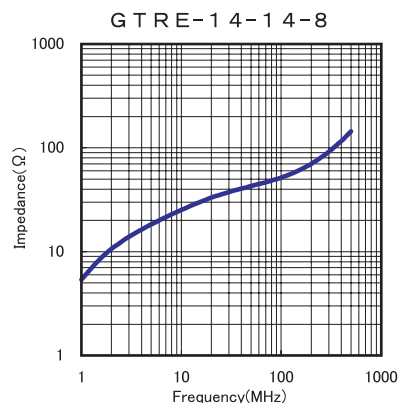
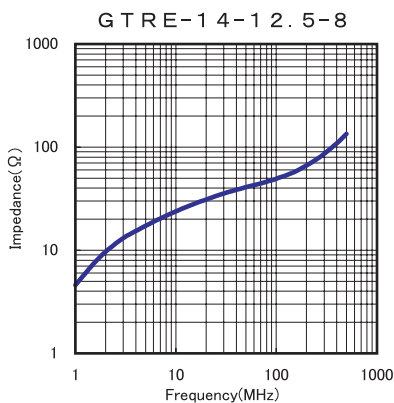
Effective measure of Common Mode Choke for EMC Design

- Recommended frequency range: several MHz – hundreds MHz
- When turn cable around the cores, GTRE is space saving compare with ordinal toroidal cores.
- The oval shape brings easy assembly of cable with connector



Part No.	A (mm)	B (mm)	C (mm)	D (mm)	E (mm)	Minimum Impedance Ω /100MHz (1turn)
GTRE-14-12.5-8	14	8	10	4	12.5	30
GTRE-14-14-8	14	8	10	4	14	35

■ Impedance vs. Frequency



■ Easy assembly work of cable with connector



* All specifications and characteristics shown herein are subject to change without notice for improvements or changes in specification.