

Ideal Solutions for Vibration, Noise and Shock Issues

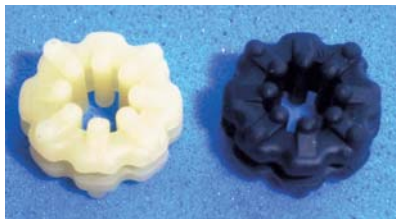


HIGH-END DAMPER / HED

Damps Vibrational Energy Efficiently

Efficient damping of vibrational energy enabled by use of highly damping LOSTOMER® TPS

Superior vibration damping performance is achieved since damper itself absorbs vibrational energy and converts it into thermal energy. Effective shock absorption is also realized thanks to the softness (JIS A 20).



SY DAMPER / SYD

Excellent Vibration Damping Performance by Special Configuration

Damps vibration efficiently by special rib structure

Efficient damping of vibration energy is achieved by adoption of special rib structure and highly damped LOSTOMER® TPO-K. Vibration amplitude at resonance point is small, thus equipment is protected from vibration.



VIBRATION-DAMPING BUSHING / VB

Ideal for Low-Frequency Vibration and Shock Control

Adoption of super soft materials enables vibration damping in low frequency range.

Vibration control in low-frequency range under 100MHz is enabled by adopting "KG-GEL" (hardness grade ASKER FP 55~90). Effective shock control is also realized, utilizing the ultra softness.

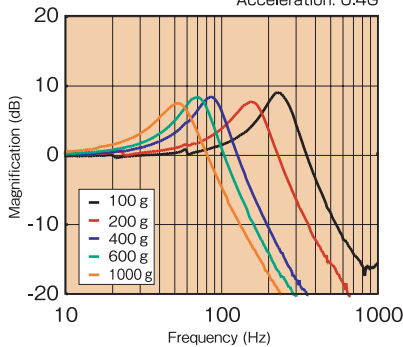


Property

Vibration Characteristic*

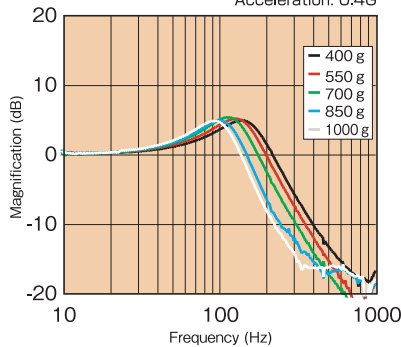
HIGH-END DAMPER

Load: As below/4-point support
Acceleration: 0.4G



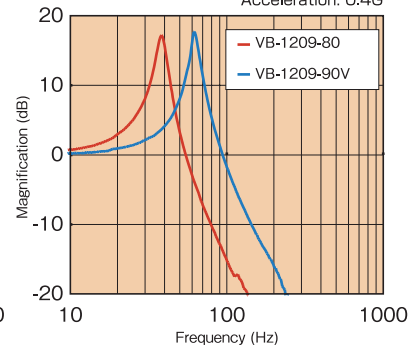
SY DAMPER

Test sample: SYD-1412-578
Load: As below/4-point support
Acceleration: 0.4G



VIBRATION-DAMPING BUSHING

Load: 400g/4-point support
Acceleration: 0.4G



* The values above are not guaranteed performance.

The data above are subject to change without notice due to product improvement.
Please contact us before use.

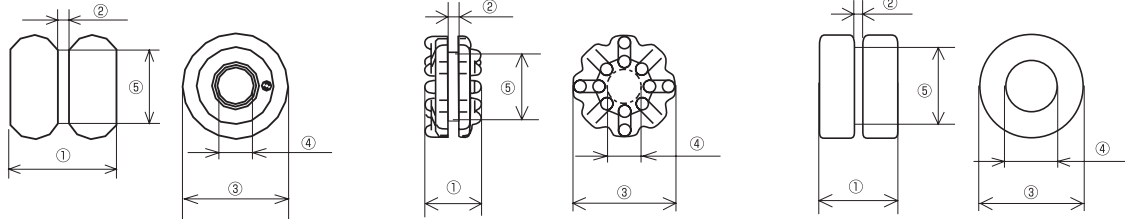
Specifications

Product Drawing

HIGH-END DAMPER / HED

SY DAMPER / SYD

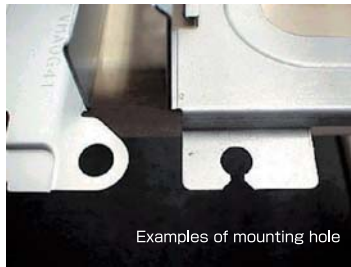
VIBRATION-DAMPING BUSHING / VB



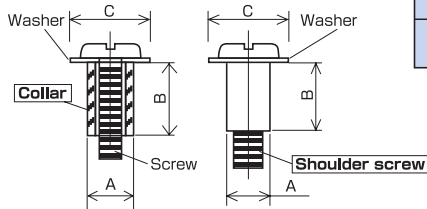
Part number	Material	Hardness	Color	①	②	③	④	⑤
HED-1111-ALS20ABK	LOSTOMER TPS	JIS A 20	Black	10.8	1	$\phi 11.1$	$\phi 3.8$	$\phi 7.7$
SYD-1010-578	LOSTOMER TPO-K	JIS A 37	Natural	5.8	1.0	$\phi 10.0$	$\phi 4.3$	$\phi 6.4$
SYD-1016-578	LOSTOMER TPO-K	JIS A 37	Black		1.6			
SYD-1412-578	LOSTOMER TPO-K	JIS A 37	Natural	8.0	1.2	$\phi 14.5$	$\phi 5.3$	$\phi 9.9$
SYD-1416-578	LOSTOMER TPO-K	JIS A 37	Black		1.6			
VB-1209-80	KG-GEL(YMG-80)	ASKER FP 80	Clear	9	1	$\phi 12$	$\phi 6$	$\phi 9$
VB-1209-90V	KG-GEL(YMG-90V)	ASKER FP 90	White					

Mounting Specifications*

Mounting Hole



Recommended Collar & Shoulder Screw*



* Washer, collar and screw are not our products.

Part number	A	B	C	Mounting hole	Board thickness
HED-1111-ALS20ABK	$\phi 4$	Recommended compression: Max. 5% of part height	$\geq \phi 10$	$\phi 7.7^{+0.2}_0$	1 ± 0.2
SYD-1010-578	$\phi 4$		$\geq \phi 10$	$\phi 6.5^{+0.1}_0$	1.0 ± 0.2
SYD-1016-578			$\geq \phi 10$		1.6 ± 0.2
SYD-1412-578	$\phi 5$		$\geq \phi 14.5$	$\phi 10^{+0.1}_0$	1.2 ± 0.1
SYD-1416-578			$\geq \phi 14.5$		1.6 ± 0.1
VB-1209-80	$\phi 6$		$\geq \phi 12$	$\phi 9^{+0.2}_0$	$t0.8 \sim 1.2$
VB-1209-90V		$\geq \phi 12$			

* Please read instructions carefully before use. The instructions are available from us.

The data above are subject to change without notice due to product improvement. Please contact us before use.